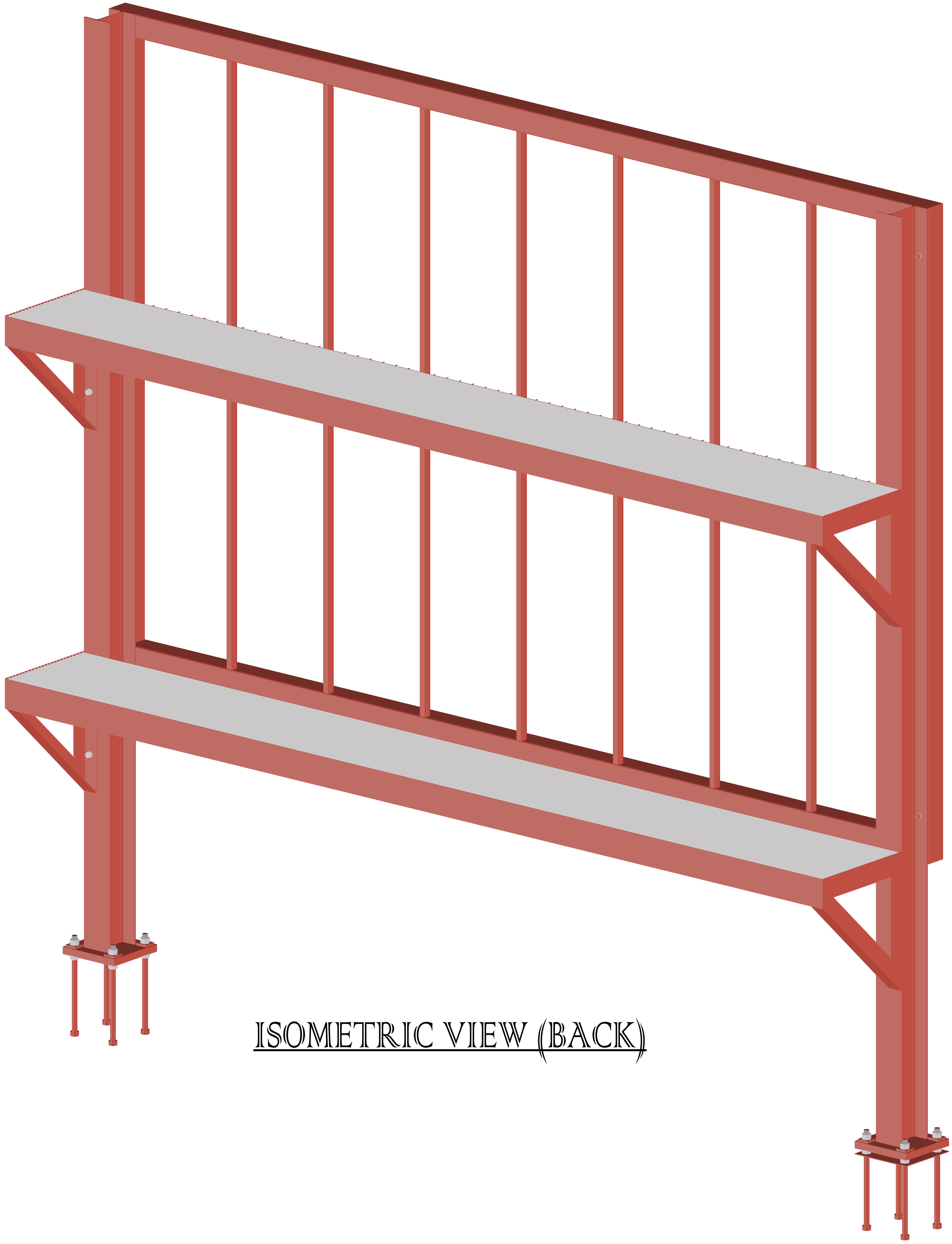




ISOMETRIC VIEW (FRONT)



ISOMETRIC VIEW (BACK)

FIELD USE

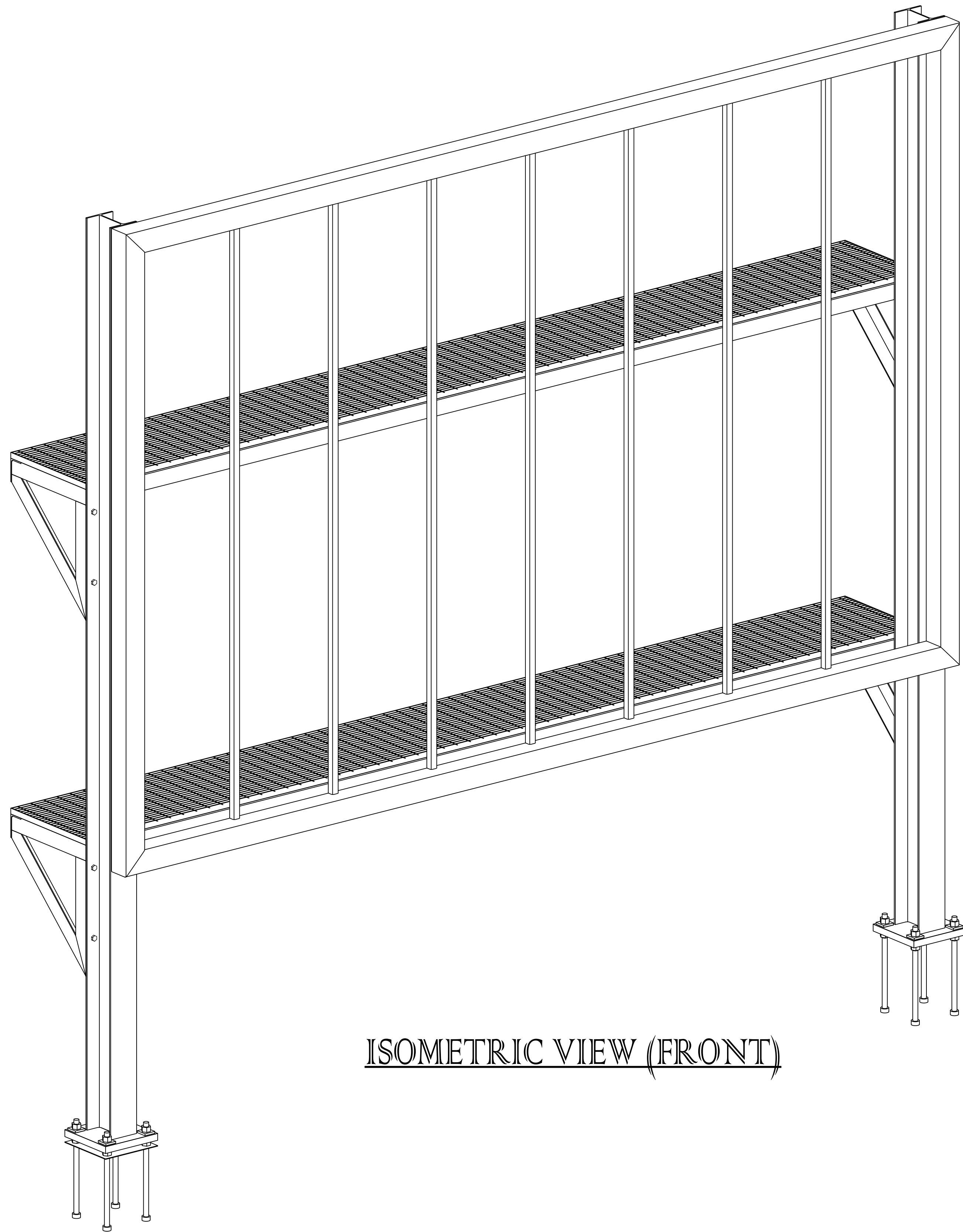
ERECTOR'S NOTE
 STEEL IS FABRICATED WITH "ERECTION MARKS" ON LEFT HAND END OF MEMBERS

THIS PLAN IS TO BE USED FOR THE SETTING OF STRUCTURAL & MISC. STEEL ONLY. IF H.S.I.'s ANCHOR BOLT SETTING PLANS WERE "NOT" FOLLOWED, THEN H.S.I. WILL "NOT" BE RESPONSIBLE FOR STEEL THAT WILL NOT FIT OR IS UNABLE TO BE PLUMBED...

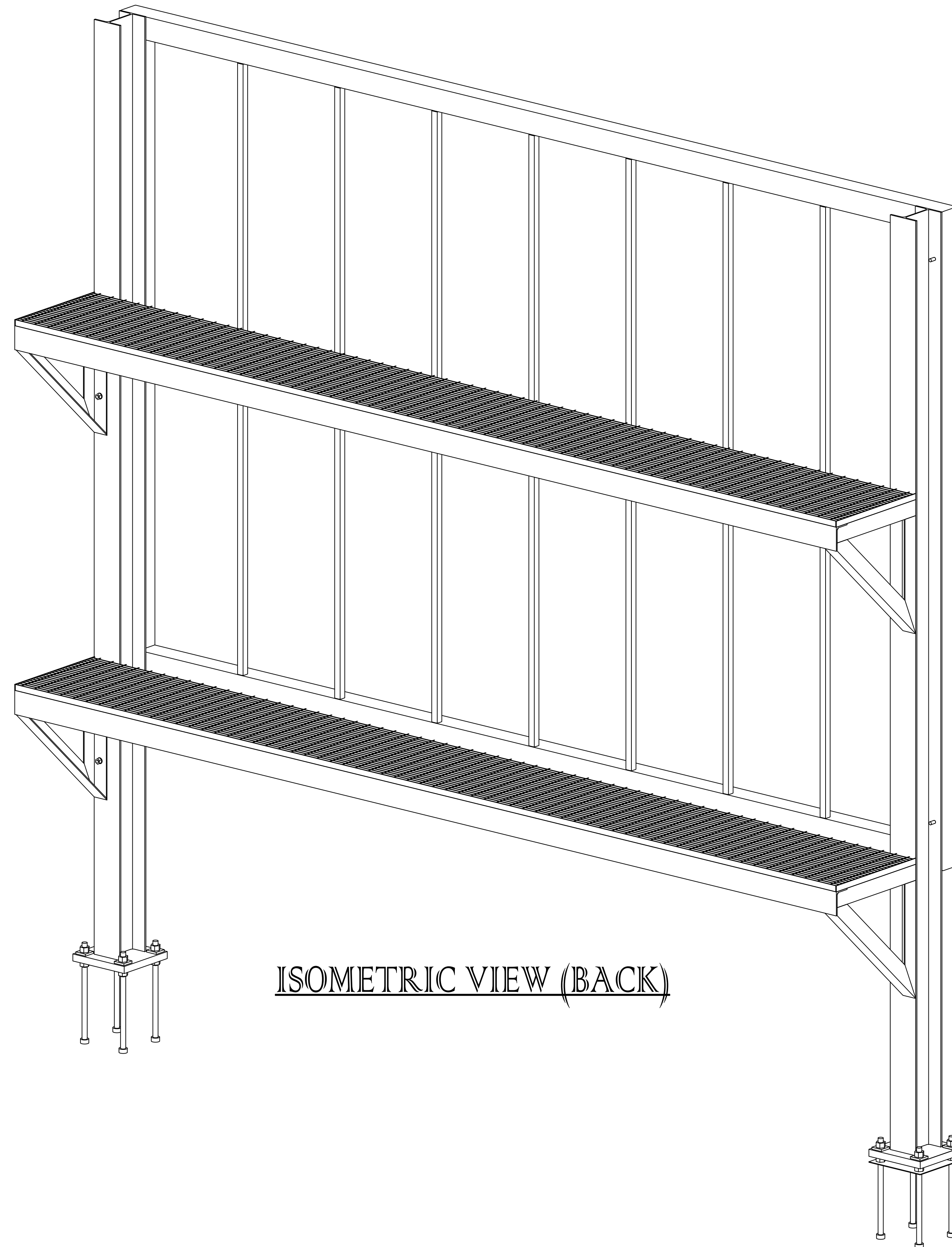
THIS PROJECT SHALL BE ERECTED PER THE AISC CODE OF STANDARD PRACTICE SPECIFICALLY PARAGRAPH 7.12 AS FOLLOWS:
 7.12 CORRECTION OF ERRORS
 NORMAL ERECTION OPERATIONS INCLUDE THE CORRECTION OF MINOR MISFITS BY MODERATE AMOUNTS OF REAMING, CHIPPING, WELDING OR CUTTING, AND THE DRAWING OF ELEMENTS INTO LINE THROUGH THE USE OF DRIFT PINS. ERRORS WHICH CANNOT BE CORRECTED BY THE FOREGOING MEANS, OR WHICH REQUIRE MAJOR CHANGES IN MEMBER CONFIGURATIONS, ARE TO BE REPORTED TO THE OWNER AND FABRICATOR BY THE ERECTOR. TO ENABLE WHOEVER IS RESPONSIBLE EITHER TO CORRECT THE ERROR OR TO APPROVE THE MOST EFFICIENT AND ECONOMIC METHOD OF CORRECTION TO BE USED BY OTHERS.
 NO BACKCHARGES WILL BE ACCEPTED UNLESS APPROVED IN WRITING BY THIS OFFICE.

REV.	DATE	DESCRIPTION	PRINTS	NO.	DATE
0	04-17	FOR FIELD USE	FIELD USE		
C	03-29	FOR RE-APPROVAL	APPROVAL		
B	03-08	FOR APPROVAL	APPROVAL		
A	12-12	FOR APPROVAL	APPROVAL		

JOB		P4 Outdoor LED Display			
LOCATION		6 Liv Tuscon, Main Gate Square, 943 E University Blvd, Tuscon, AZ 85719			
CUSTOMER					
DRWG. COVERS		ISOMETRIC VIEW			
DETAILER	AKM	DATE	12-09-21	JOB NO.	
CHECKER	ALN	DATE	12-09-21	DRWG. NO.	V100



ISOMETRIC VIEW (FRONT)



ISOMETRIC VIEW (BACK)

FIELD USE

ERECTOR'S NOTE
 STEEL IS FABRICATED WITH "ERECTION MARKS" ON LEFT HAND END OF MEMBERS

THIS PLAN IS TO BE USED FOR THE SETTING OF STRUCTURAL & MISC. STEEL ONLY. IF H.S.I.'s ANCHOR BOLT SETTING PLANS WERE "NOT" FOLLOWED, THEN H.S.I. WILL "NOT" BE RESPONSIBLE FOR STEEL THAT WILL NOT FIT OR IS UNABLE TO BE PLUMBED...

THIS PROJECT SHALL BE ERECTED PER THE AISC CODE OF STANDARD PRACTICE SPECIFICALLY PARAGRAPH 7.12 AS FOLLOWS:
 7.12 CORRECTION OF ERRORS
 NORMAL ERECTION OPERATIONS INCLUDE THE CORRECTION OF MINOR MISFITS BY MODERATE AMOUNTS OF REAMING, CHIPPING, WELDING OR CUTTING, AND THE DRAWING OF ELEMENTS INTO LINE THROUGH THE USE OF DRIFT PINS. ERRORS WHICH CANNOT BE CORRECTED BY THE FOREGOING MEANS, OR WHICH REQUIRE MAJOR CHANGES IN MEMBER CONFIGURATIONS, ARE TO BE REPORTED TO THE OWNER AND FABRICATOR BY THE ERECTOR. TO ENABLE WHOEVER IS RESPONSIBLE EITHER TO CORRECT THE ERROR OR TO APPROVE THE MOST EFFICIENT AND ECONOMIC METHOD OF CORRECTION TO BE USED BY OTHERS.
 NO BACKCHARGES WILL BE ACCEPTED UNLESS APPROVED IN WRITING BY THIS OFFICE.

REV.	DATE	DESCRIPTION	PRINTS	NO.	DATE
0	04-17	FOR FIELD USE	FIELD USE		
C	03-29	FOR RE-APPROVAL	APPROVAL		
B	03-08	FOR APPROVAL	APPROVAL		
A	12-12	FOR APPROVAL	APPROVAL		

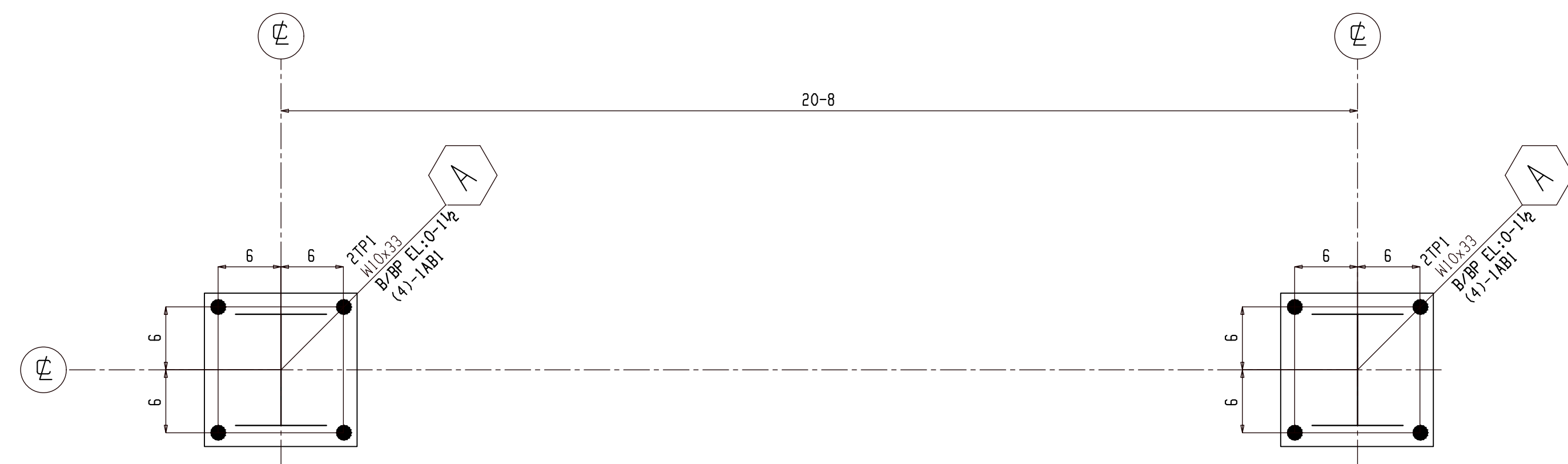
JOB: P4 Outdoor LED Display

LOCATION: 6 Liv Tuscon, Main Gate Square, 943 E University Blvd, Tuscon, AZ 85719

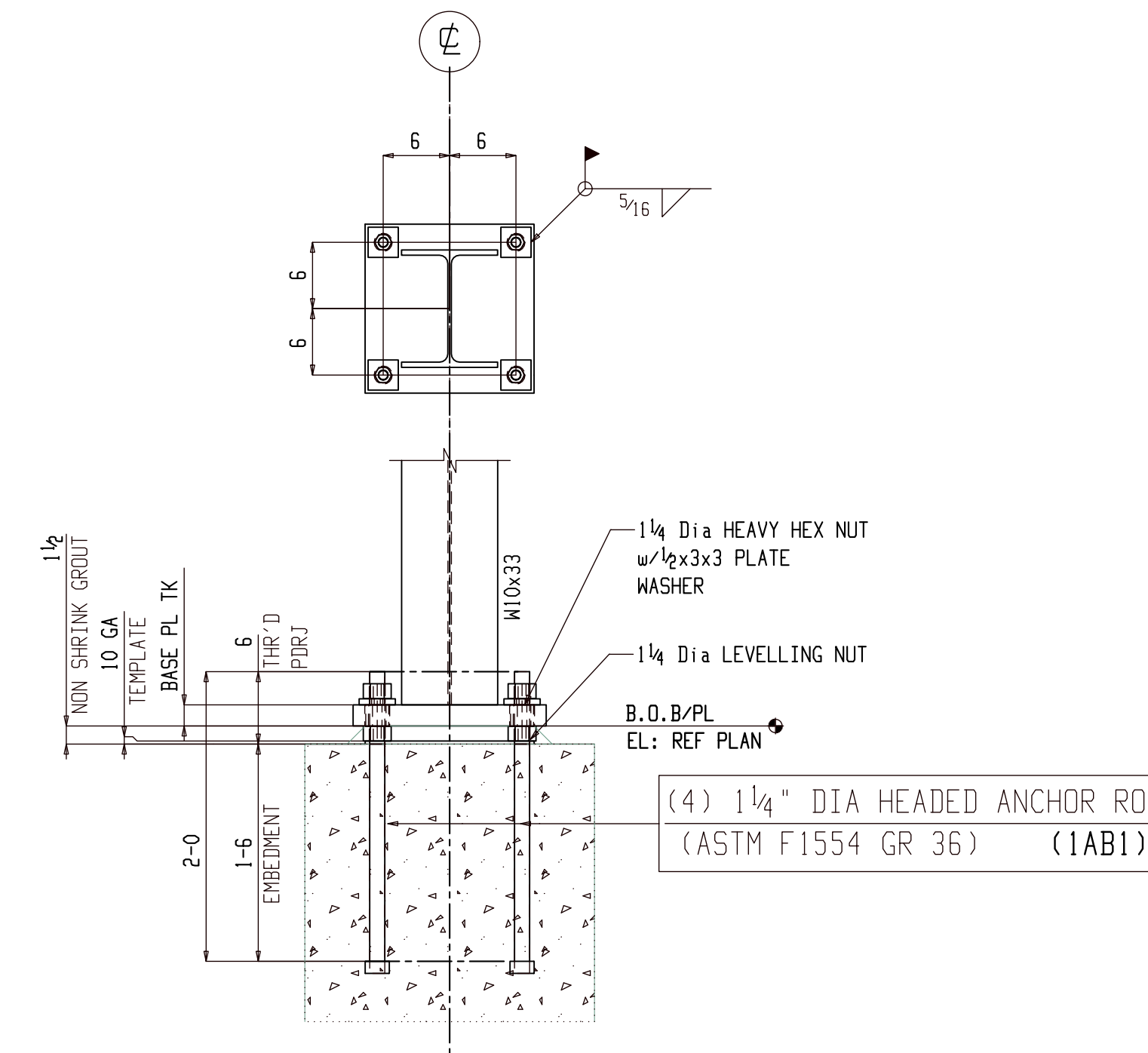
CUSTOMER: _____

DRWG. COVERS: ISOMETRIC VIEW

DETAILER: AKM	DATE: 12-09-21	JOB NO.:	DRWG. NO.:
CHECKER: ALN	DATE: 12-09-21		V101

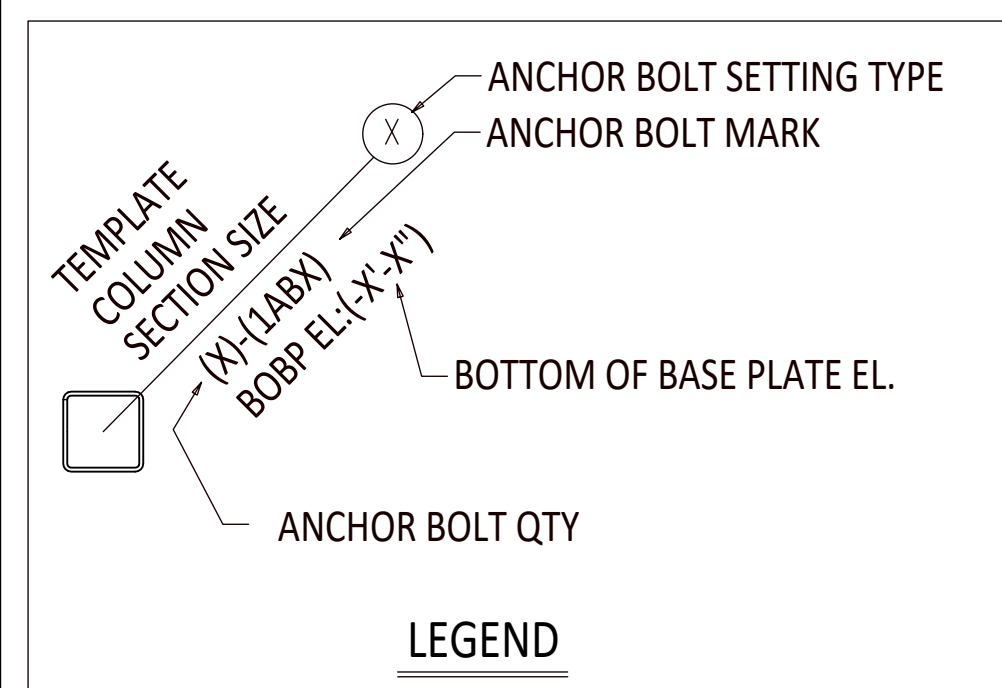


ANCHOR BOLT LAYOUT PLAN
 BOTTOM OF BASE PLATE ELEVATION AS INDICATED ON PLAN



A ANCHOR ROD SETTING DETAIL
 AB1 (REFER:) (2 LOCATIONS)

FIELD USE



ERECTOR'S NOTE
 STEEL IS FABRICATED WITH "ERECTION MARKS" ON LEFT HAND END OF MEMBERS

THIS PLAN IS TO BE USED FOR THE SETTING OF STRUCTURAL & MISC. STEEL ONLY. IF H.S.I.'S ANCHOR BOLT SETTING PLANS WERE "NOT" FOLLOWED, THEN H.S.I. WILL "NOT" BE RESPONSIBLE FOR STEEL THAT WILL NOT FIT OR IS UNABLE TO BE PLUMBED...

THIS PROJECT SHALL BE ERECTED PER THE AISC CODE OF STANDARD PRACTICE SPECIFICALLY PARAGRAPH 7.12 AS FOLLOWS:
 7.12 CORRECTION OF ERRORS
 NORMAL ERECTION OPERATIONS INCLUDE THE CORRECTION OF MINOR MISFITS BY MODERATE AMOUNTS OF REAMING, CHIPPING, WELDING OR CUTTING, AND THE DRAWING OF ELEMENTS INTO LINE THROUGH THE USE OF DRIFT PINS. ERRORS WHICH CANNOT BE CORRECTED BY THE FOREGOING MEANS, OR WHICH REQUIRE MAJOR CHANGES IN MEMBER CONFIGURATIONS, ARE TO BE REPORTED TO THE OWNER AND FABRICATOR BY THE ERECTOR, TO ENABLE WHOEVER IS RESPONSIBLE EITHER TO CORRECT THE ERROR OR TO APPROVE THE MOST EFFICIENT AND ECONOMIC METHOD OF CORRECTION TO BE USED BY OTHERS.
 NO BACKCHARGES WILL BE ACCEPTED UNLESS APPROVED IN WRITING BY THIS OFFICE.

REV.	DATE	DESCRIPTION	PRINTS	NO.	DATE
0	04-17	FOR FIELD USE	FIELD USE		
C	03-29	FOR RE-APPROVAL	APPROVAL		
B	03-08	FOR APPROVAL	APPROVAL		
A	12-12	FOR APPROVAL	APPROVAL		

JOB: P4 Outdoor LED Display

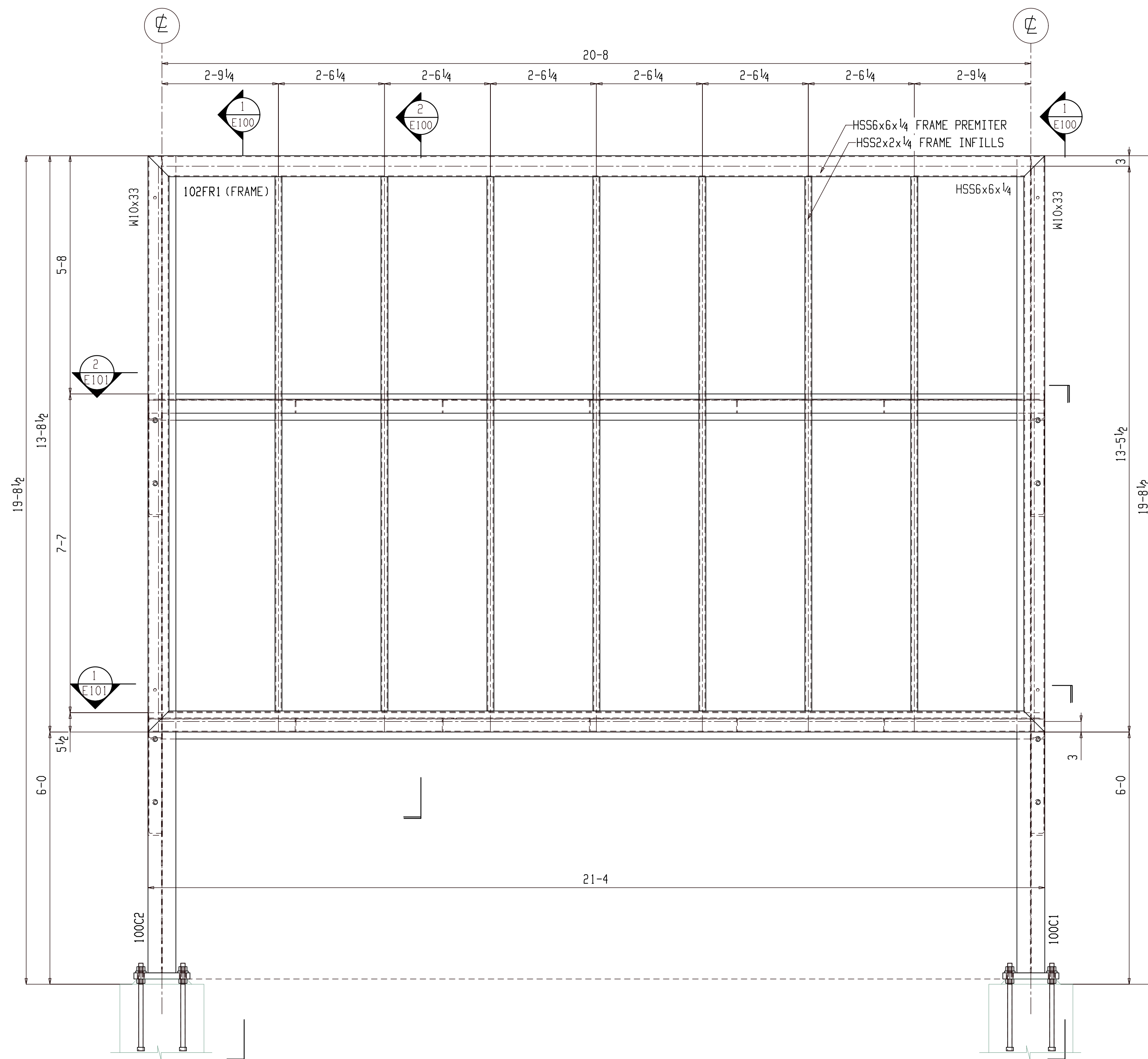
LOCATION: 6 Liv Tuscon, Main Gate Square, 943 E University Blvd, Tuscon, AZ 85719

CUSTOMER: ANCHOR BOLT LAYOUT PLAN & SETTING DETAIL

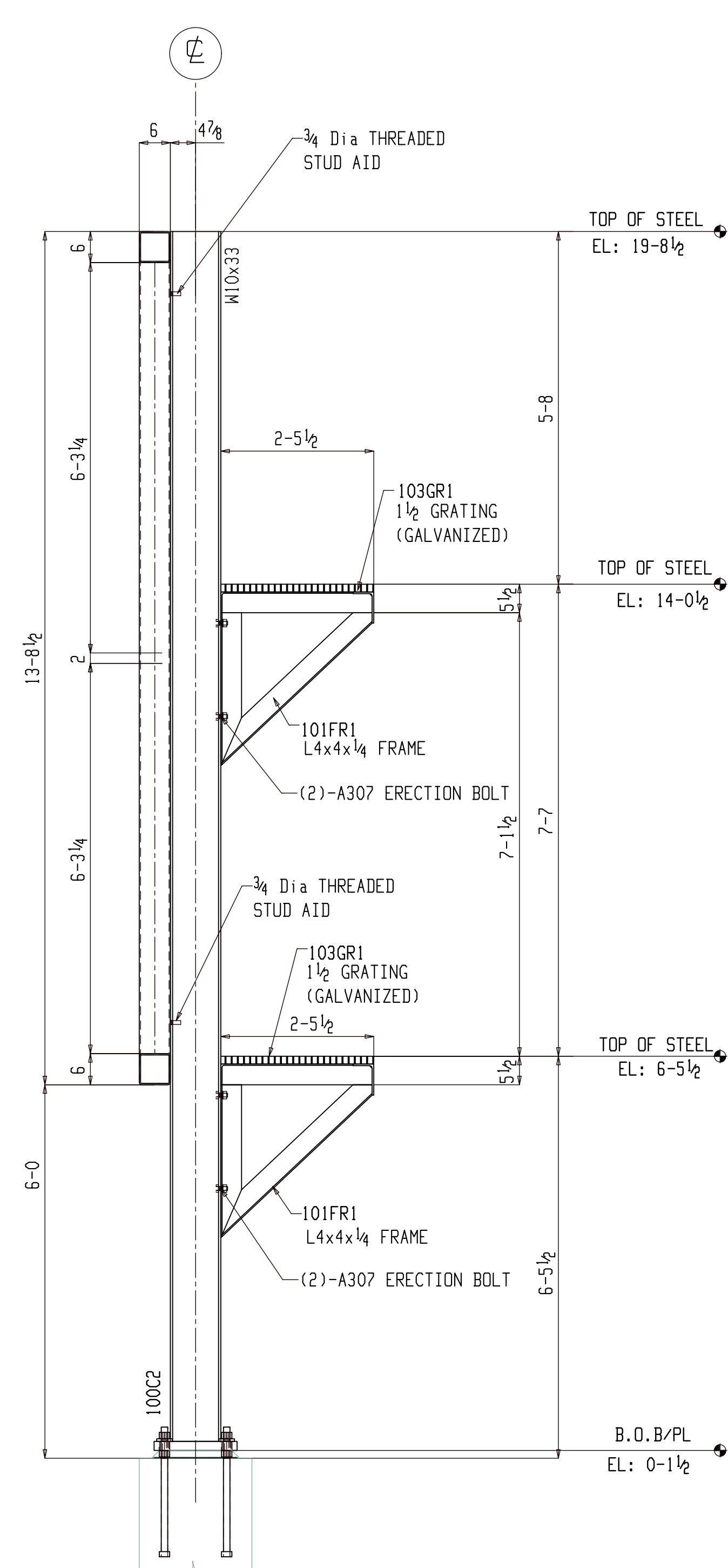
DRWG. COVERS: ANCHOR BOLT LAYOUT PLAN & SETTING DETAIL

DETAILER: AKM DATE: 12-09-21
 CHECKER: ALN DATE: 12-09-21

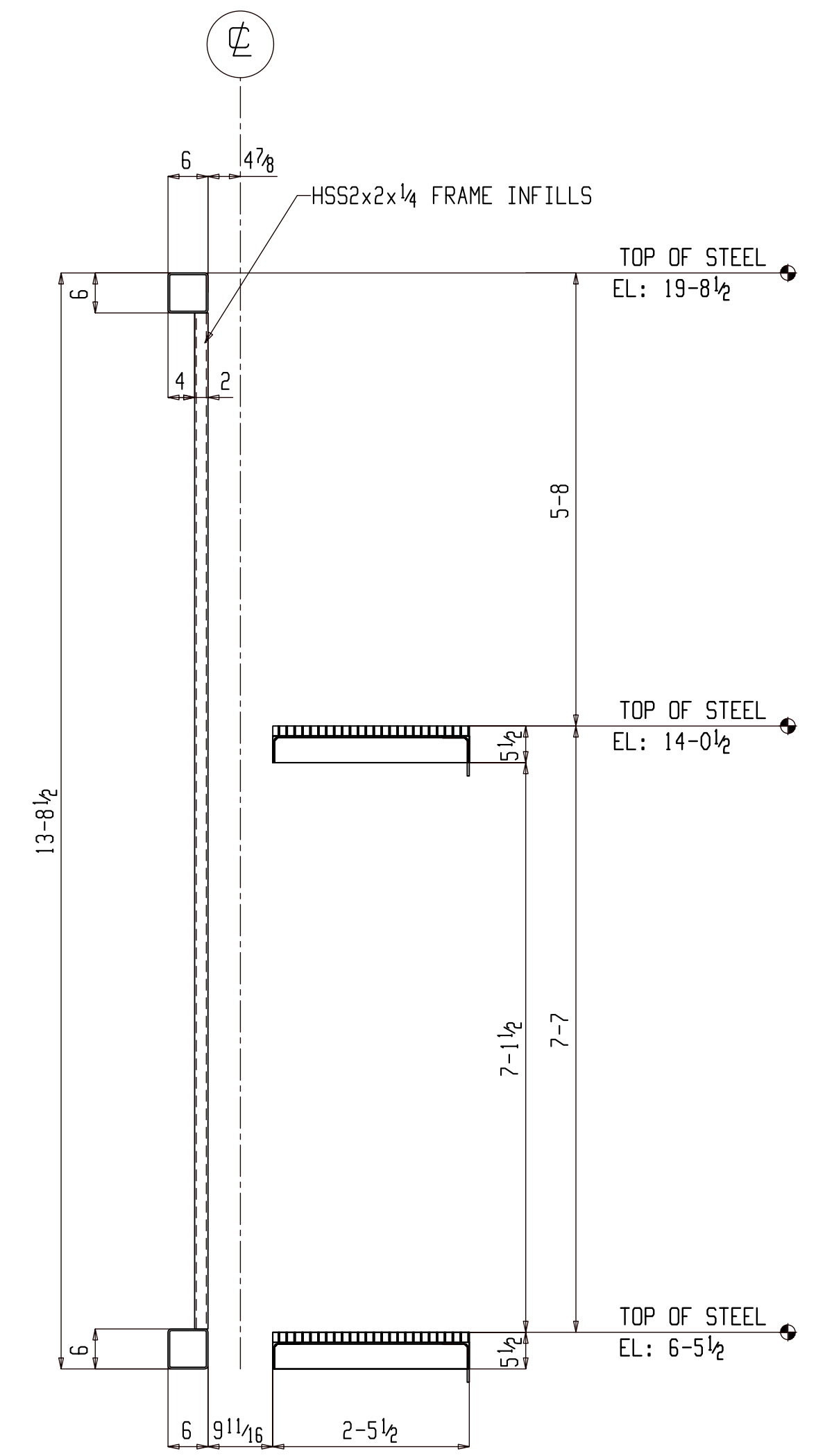
JOB NO. _____
 DRWG. NO. **AB1**



LED DISPLAY FRAME FRONT ELEVATION



1 SECTION E100



2 SECTION E100

FIELD USE

ERECTOR'S NOTE
 STEEL IS FABRICATED WITH "ERECTION MARKS" ON LEFT HAND END OF MEMBERS

THIS PLAN IS TO BE USED FOR THE SETTING OF STRUCTURAL & MISC. STEEL ONLY. IF H.S.I.'s ANCHOR BOLT SETTING PLANS WERE "NOT" FOLLOWED, THEN H.S.I. WILL "NOT" BE RESPONSIBLE FOR STEEL THAT WILL NOT FIT OR IS UNABLE TO BE PLUMBED...

THIS PROJECT SHALL BE ERECTED PER THE AISC CODE OF STANDARD PRACTICE SPECIFICALLY PARAGRAPH 7.12 AS FOLLOWS:
 7.12 CORRECTION OF ERRORS
 NORMAL ERECTION OPERATIONS INCLUDE THE CORRECTION OF MINOR MISFITS BY MODERATE AMOUNTS OF REAMING, CHIPPING, WELDING OR CUTTING, AND THE DRAWING OF ELEMENTS INTO LINE THROUGH THE USE OF DRIFT PINS. ERRORS WHICH CANNOT BE CORRECTED BY THE FOREGOING MEANS, OR WHICH REQUIRE MAJOR CHANGES IN MEMBER CONFIGURATIONS, ARE TO BE REPORTED TO THE OWNER AND FABRICATOR BY THE ERECTOR, TO ENABLE WHOEVER IS RESPONSIBLE EITHER TO CORRECT THE ERROR OR TO APPROVE THE MOST EFFICIENT AND ECONOMIC METHOD OF CORRECTION TO BE USED BY OTHERS.
 NO BACKCHARGES WILL BE ACCEPTED UNLESS APPROVED IN WRITING BY THIS OFFICE.

REV.	DATE	DESCRIPTION	PRINTS	NO.	DATE
0	04-17	FOR FIELD USE	FIELD USE		
C	03-29	FOR RE-APPROVAL	APPROVAL		
B	03-08	FOR APPROVAL	APPROVAL		
A	12-12	FOR APPROVAL	APPROVAL		

JOB: P4 Outdoor LED Display

LOCATION: 6 Liv Tuscon, Main Gate Square, 943 E University Blvd, Tuscon, AZ 85719

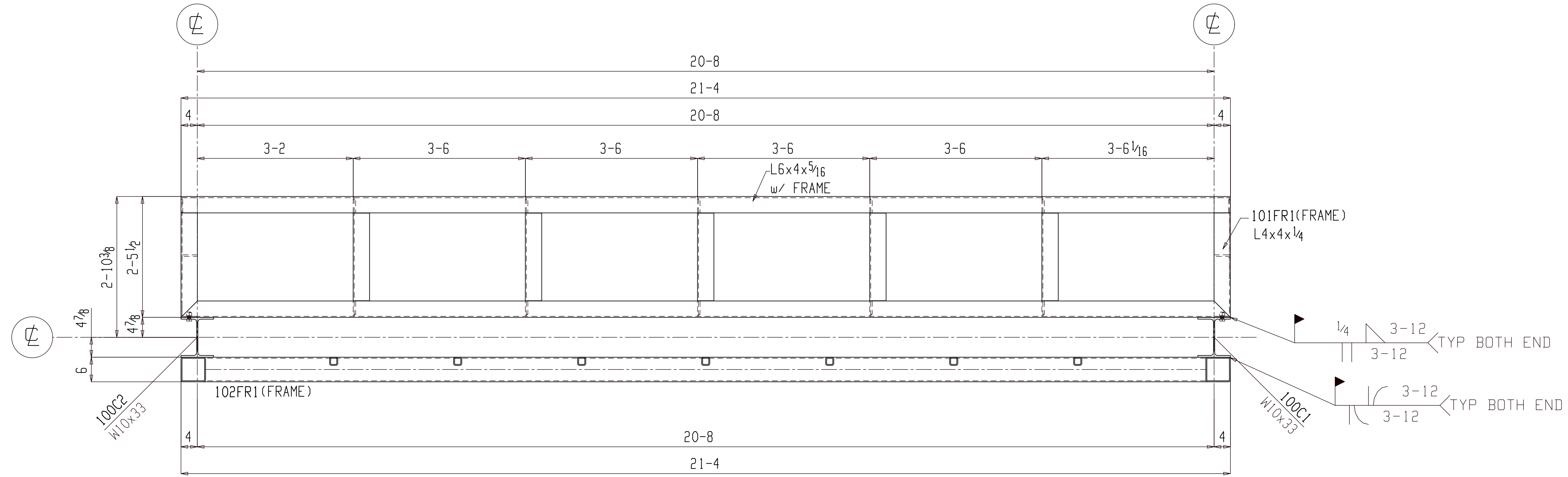
CUSTOMER: P4 OUTDOOR LED DISPLAY FRAMING LAYOUT AND SECTIONS

DRWG. COVERS: P4 OUTDOOR LED DISPLAY FRAMING LAYOUT AND SECTIONS

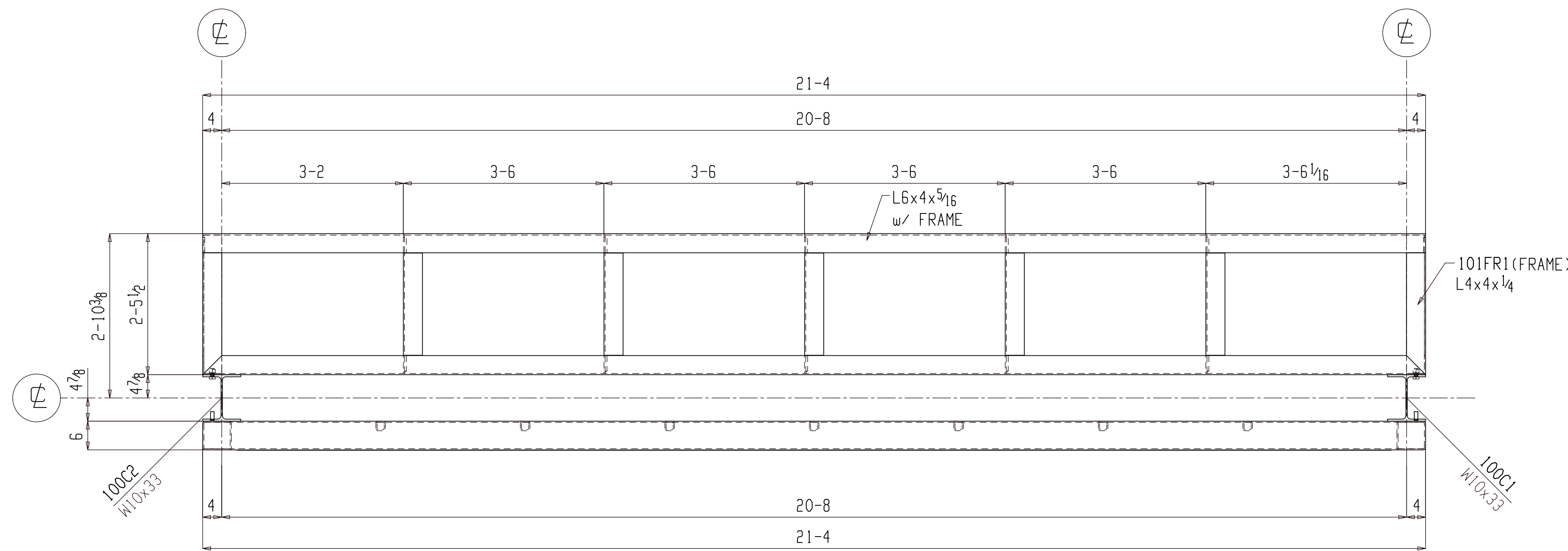
DETAILER: AKM DATE: 12-09-21

CHECKER: ALN DATE: 12-09-21

JOB NO. DRWG. NO. E100



1 SECTION
E101



2 SECTION
E101

FIELD USE

ERECTOR'S NOTE
STEEL IS FABRICATED WITH "ERECTION MARKS" ON LEFT HAND END OF MEMBERS

THIS PLAN IS TO BE USED FOR THE SETTING OF STRUCTURAL & MISC. STEEL ONLY. IF H.S.I.'s ANCHOR BOLT SETTING PLANS WERE "NOT" FOLLOWED, THEN H.S.I. WILL "NOT" BE RESPONSIBLE FOR STEEL THAT WILL NOT FIT OR IS UNABLE TO BE PLUMBED...

THIS PROJECT SHALL BE ERECTED PER THE AISC CODE OF STANDARD PRACTICE SPECIFICALLY PARAGRAPH 7.12 AS FOLLOWS:
7.12 CORRECTION OF ERRORS
NORMAL ERECTION OPERATIONS INCLUDE THE CORRECTION OF MINOR MISSETS BY MODERATE AMOUNTS OF REAMING, CHIPPING, WELDING OR CUTTING, AND THE DRAWING OF ELEMENTS INTO LINE THROUGH THE USE OF DRIFT PINS. ERRORS WHICH CANNOT BE CORRECTED BY THE FOREGOING MEANS, OR WHICH REQUIRE MAJOR CHANGES IN MEMBER CONFIGURATIONS, ARE TO BE REPORTED TO THE OWNER AND FABRICATOR BY THE ERECTOR. TO ENABLE WHOEVER IS RESPONSIBLE EITHER TO CORRECT THE ERROR OR TO APPROVE THE MOST EFFICIENT AND ECONOMIC METHOD OF CORRECTION TO BE USED BY OTHERS.
NO BACKCHARGES WILL BE ACCEPTED UNLESS APPROVED IN WRITING BY THIS OFFICE.

REV.	DATE	DESCRIPTION	PRINTS	NO.	DATE
0	04-17	FOR FIELD USE	FIELD USE		
C	03-29	FOR RE-APPROVAL	APPROVAL		
B	03-08	FOR APPROVAL	APPROVAL		
A	12-12	FOR APPROVAL	APPROVAL		

JOB: P4 Outdoor LED Display

LOCATION: 6 Liv Tuscon, Main Gate Square, 943 E University Blvd, Tuscon, AZ 85719

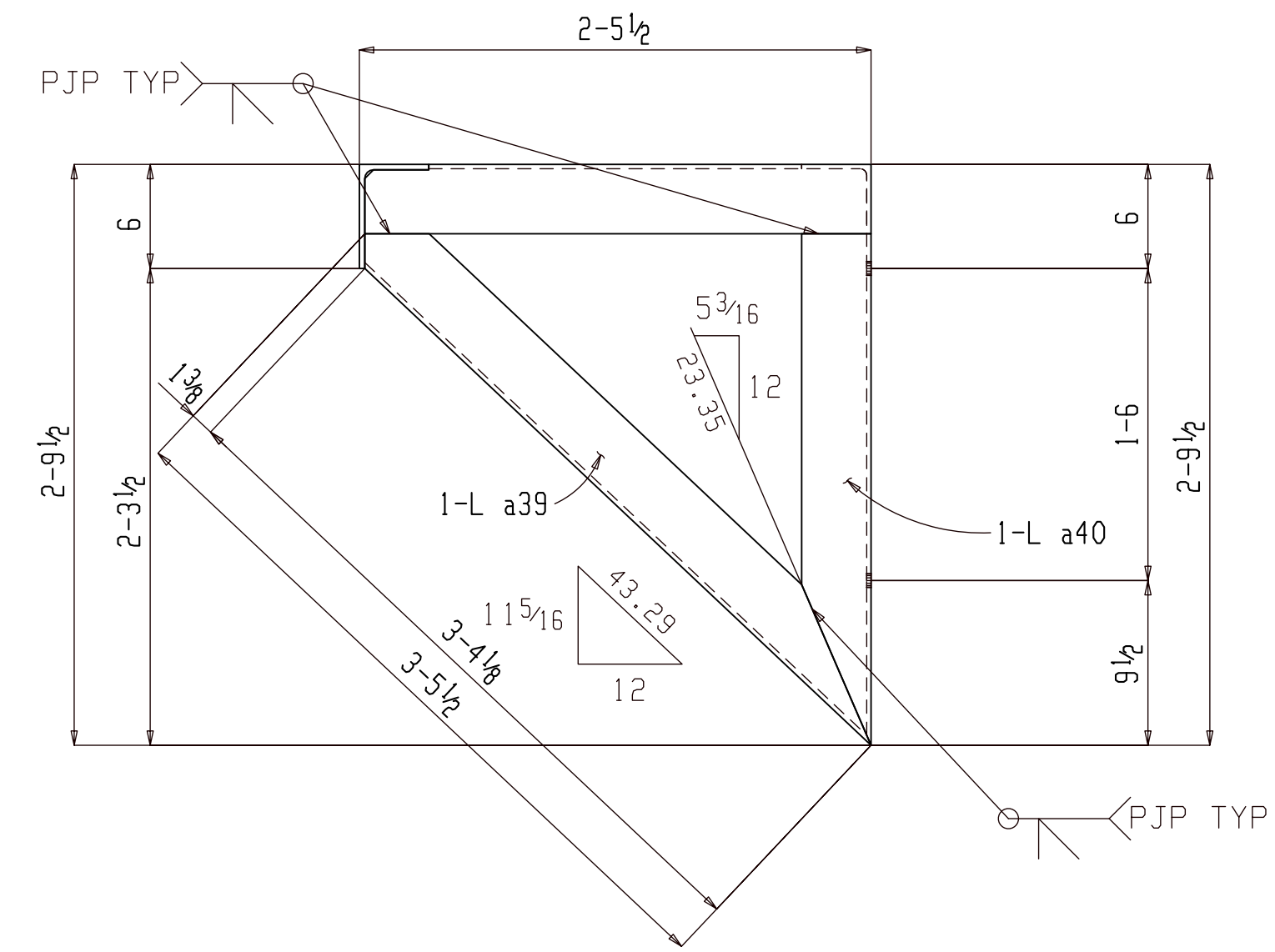
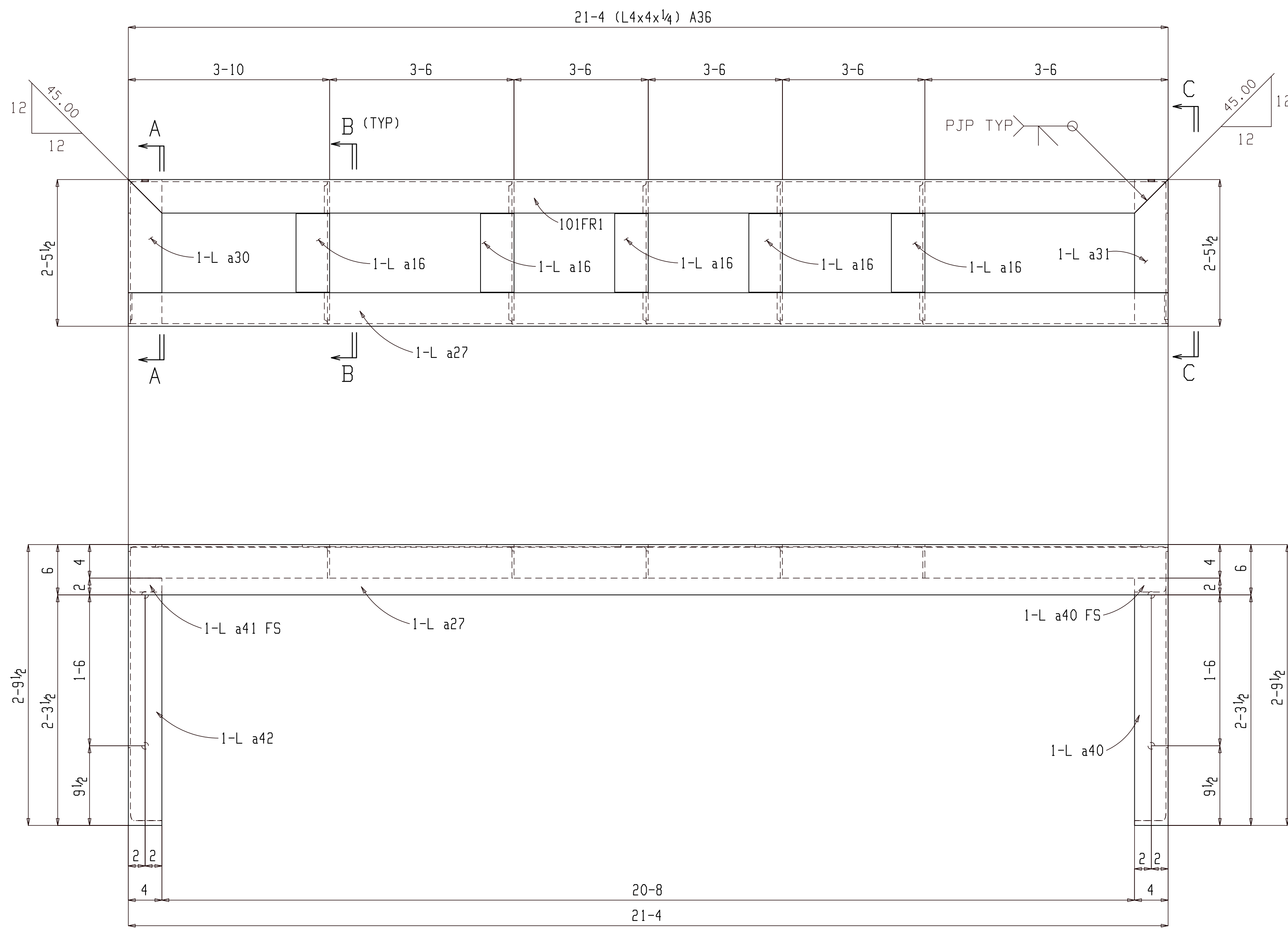
CUSTOMER: SECTION VIEWS

DRWG. COVERS: SECTION VIEWS

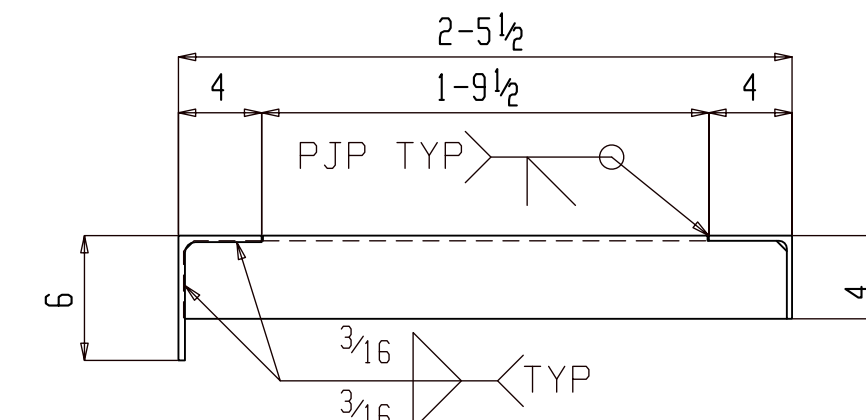
DETAILER: AKM DATE: 12-09-21

CHECKER: ALN DATE: 12-09-21

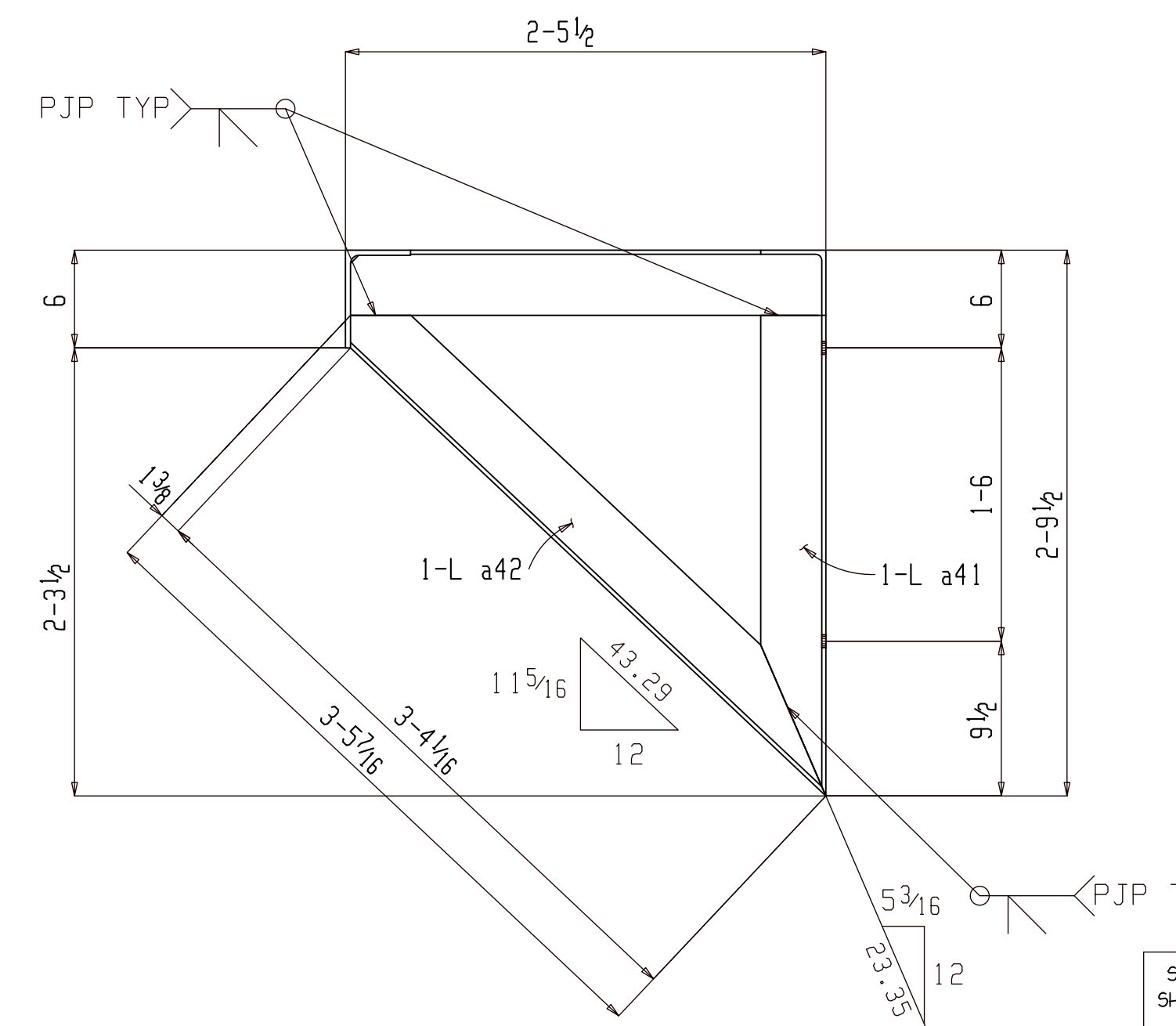
JOB NO. DRWG. NO. E101



Section C-C
101FR1



Section B-B
101FR1



Section A-A
101FR1

SHOP NOTE:
WELDS ON LED MODULE STRUCTURE
SHALL BE GROUND FLAT (TYPICAL)

2 FRAMES 101FR1

(E REFER: E100)

ISC PRIMER

VERIFY PAINT NOTE
PRIOR TO FAB.

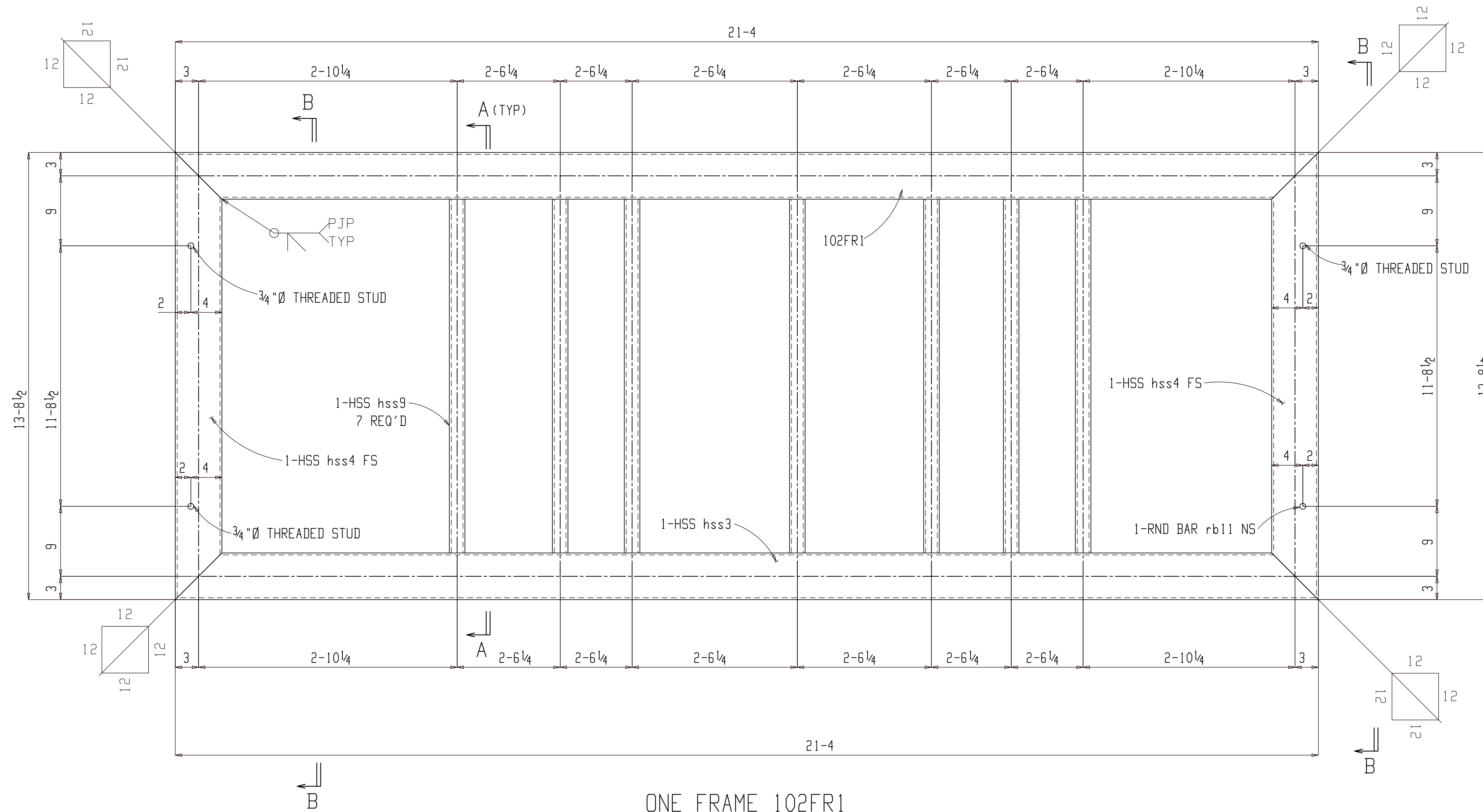
BILL OF MATERIAL

NO.	RE	ASSY	M	MATERIAL	LENGTH	REMARKS
2				FRAME		
2	101FR1			L4x4x1/4	21-4	A36
2	a27			L6x4x3/16	21-4	A36
2	a39			L4x4x1/4	3-5 1/2	A36
2	a42			L4x4x1/4	3-5 1/2	A36
2	a40			L4x4x1/4	2-5 1/2	A36
2	a41			L4x4x1/4	2-5 1/2	A36
2	a30			L4x4x1/4	2-5 1/2	A36
2	a31			L4x4x1/4	2-5 1/2	A36
10	a16			L4x4x1/4	2-5	A36

FIELD BOLTS						
8				3/4 Dia A307	1 1/4	1 FL WASH

FABRICATION

0	04-17	FOR FABRICATION	FABRICATION		
C	03-29	FOR RE-APPROVAL	APPROVAL		
B	03-08	FOR APPROVAL	APPROVAL		
A	12-12	FOR APPROVAL	APPROVAL		
REV.	DATE	DESCRIPTION	PRINTS	NO.	DATE
SHOP CLEAN: SSPC-SP3 SHOP PRIME WITH 1 COAT GRAY OXIDE ALL MATERIAL INTD "AESS" SHOP CLEANING - SSPC-SP6 SHOP PRIME WITH 1 COAT GRAY PRIMER STEEL NOTES: MISC. SHAPES, P's & BARS - A36 STRUCTURAL STEEL SHAPES - A992 Gr 50 STRUCTURAL TUBING - A500 GR.C STEEL PIPE - A53 GR.B SHOP CONNECTIONS: E70XX (UN) FIELD CONNECTIONS: A325 "N" (UN) ALL SHOP HOLES TO BE 3/16" (UN) SHOP NOTES: ALL STUBS ARE FROM FACE OF CLIP ANGLES ALL HOLE SPACING 3" C/C UNLESS NOTED ALL BLOCK SIZES FROM FACE OF CLIP ANGLES ALL REAR ENTRANT CUTS HAVE A MINIMUM OF 1/2" RADIUS CUTS.					
JOB: P4 Outdoor LED Display					
LOCATION: 8 Liv Tuscon, Main Gate Square, 943 E University Blvd, Tuscon, AZ 85719					
CUSTOMER:					
DRAWG. COVERS: FRAME DETAILS					
DETAILER: AKM	DATE: 12-09-21	JOB NO.:	DRWG. NO.:		
CHECKER: ALN	DATE: 12-09-21			101	

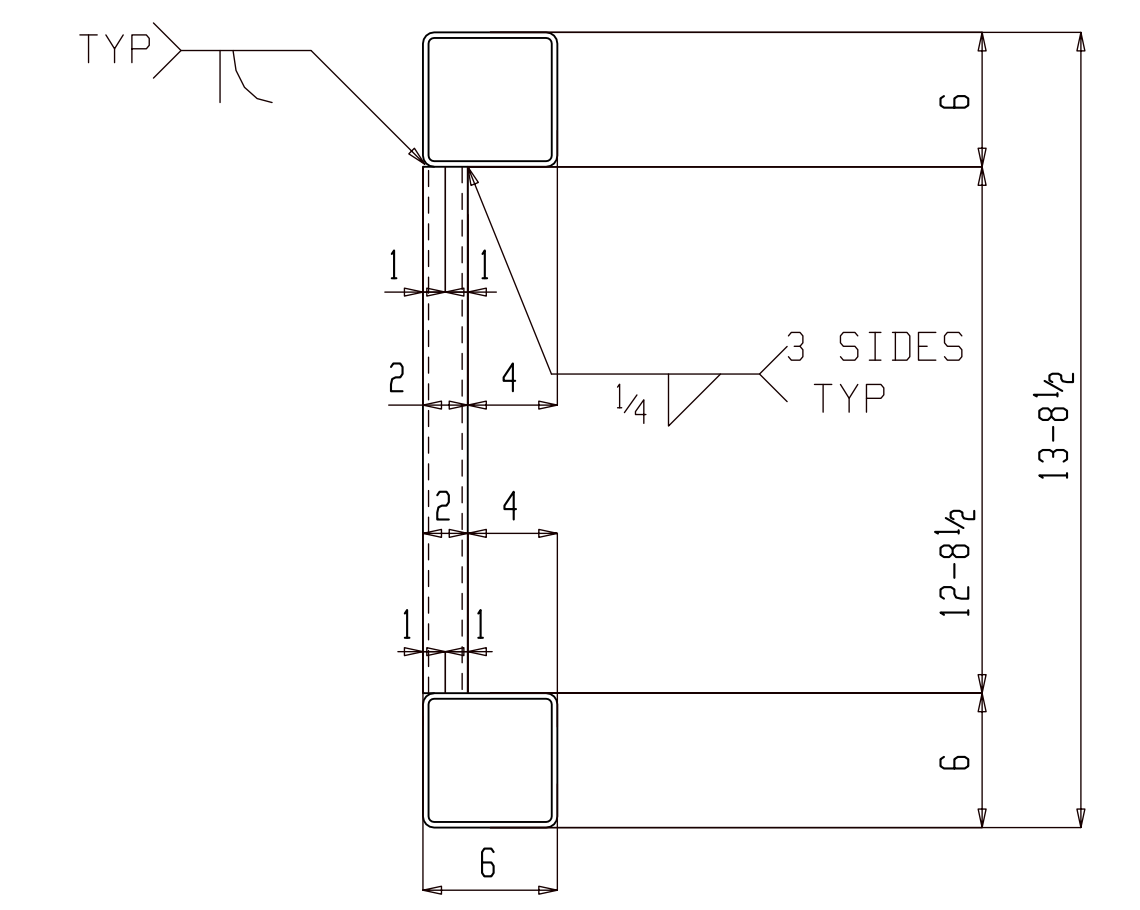


ONE FRAME 102FR1

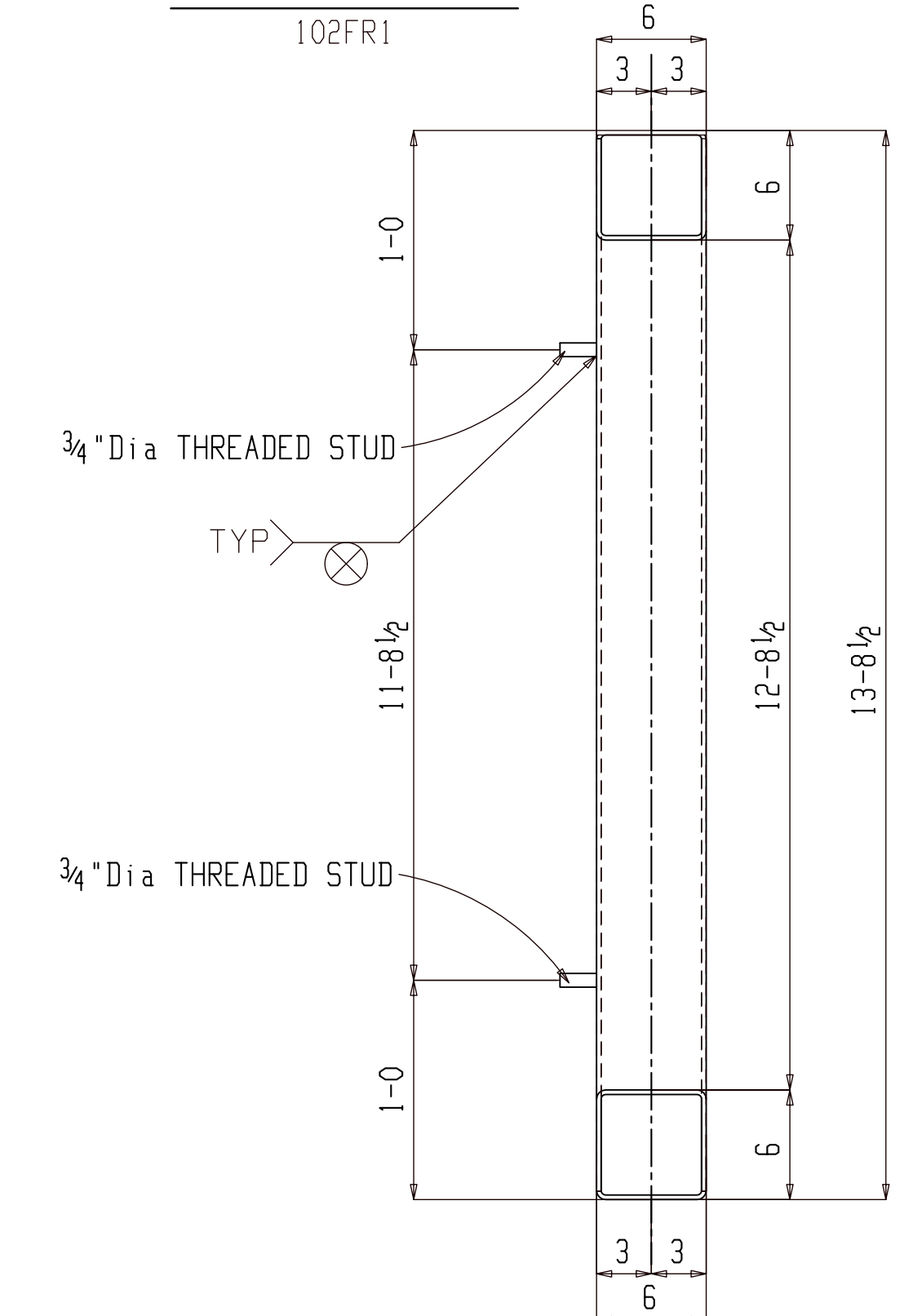
E REFER: E100

ISC PRIMER

VERIFY PAINT NOTE
PRIOR TO FAB.



Section A-A



Section B-B

102FR1

SHOP NOTE:
WELDS ON LED MODULE STRUCTURE
SHALL BE GROUND FLAT (TYPICAL)

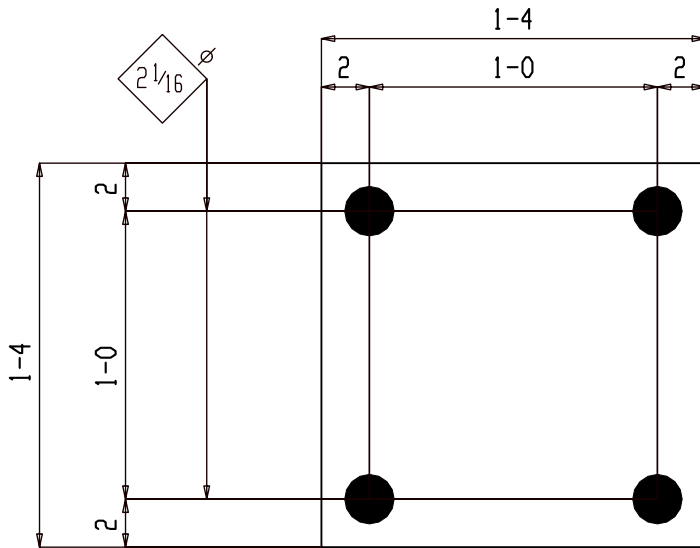
BILL OF MATERIAL

NO.	RE	ASSY	M	MATERIAL	LENGTH	REMARKS
ONE				FRAME		
1	102FR1			HSS6x6x1/4	21'-4"	A500C
1	hss3			HSS6x6x1/4	21'-4"	A500C
2	hss4			HSS6x6x1/4	13'-8 1/2"	A500C
7	hss9			HSS2x2x1/4	12'-8 1/2"	A500C
4				3/4" Dia THREADED STUD	2	

FABRICATION

SHOP CLEAN - SSPC-SP3 SHOP PRIME WITH 1 COAT GRAY OXIDE ALL MATERIAL INTD "AESS" SHOP CLEANING - SSPC-SP6 SHOP PRIME WITH 1 COAT GRAY PRIMER	0 04-17 FOR FABRICATION FABRICATION		
	C 03-29 FOR RE-APPROVAL APPROVAL		
	B 03-08 FOR APPROVAL APPROVAL		
	A 12-12 FOR APPROVAL APPROVAL		
STEEL NOTES: MISC. SHAPES, P's & BARS - A36 STRUCTURAL STEEL SHAPES - A992 Gr 50 STRUCTURAL TUBING - A500 GR.C STEEL PIPE - A53 GR.B	REV.	DATE	DESCRIPTION PRINTS NO. DATE
SHOP CONNECTIONS E70XX (UN)	FIELD CONNECTIONS A325 "N" (UN)	JOB P4 Outdoor LED Display	
ALL SHOP HOLES TO BE 3/16" (UN)		LOCATION 8 Liv Tuscon, Main Gate Square, 943 E University Blvd, Tuscon, AZ 85719	
SHOP NOTES: ALL STUBS ARE FROM FACE OF CLIP ANGLES ALL HOLE SPACING 3" C/C UNLESS NOTED ALL BLOCK SIZES FROM FACE OF CLIP ANGLES ALL REAR ENTRANT CUTS HAVE A MINIMUM OF 1/2" RADIUS CUTS.		CUSTOMER	
		DRAWG. COVERS FRAME DETAILS	
		DATE 12-09-21	JOB NO.
		DATE 12-09-21	DRWG. NO.
			102

REV	DATE	REMARKS
0	04-17-22	FOR FABRICATION



2 PL1³/₄x16x1-4 BP1_1

GRADE: A36

NO PAINT

Holes ¹³/₁₆ Ø Unless Noted

PROJECT

P4 Outdoor LED Display

0 Liv Tuscon, Main Gate Square, 943 E University Blvd, Tuscon, AZ 85719

PROJECT NO. :

DRAWN BY

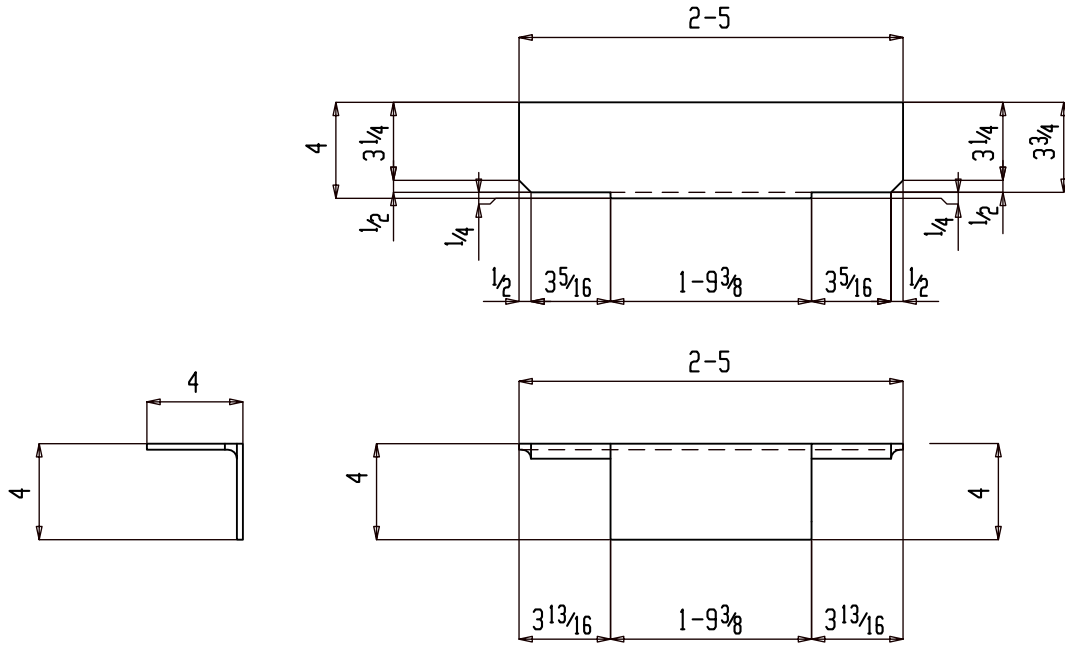
JB

CHK'D BY

ALN

BP1_1

REV	DATE	REMARKS
0	04-17-22	FOR FABRICATION



10 L4x4x $\frac{1}{4}$ x2-5 a16

GRADE: A36

NO PAINT

Holes $\frac{13}{16}$ \emptyset Unless Noted

PROJECT P4 Outdoor LED Display
 0 Liv Tuscon, Main Gate Square, 943 E University Blvd, Tuscon, AZ 85719

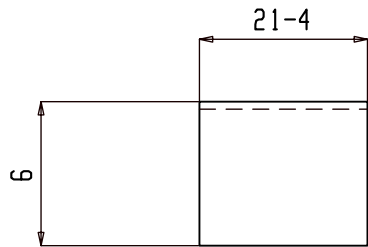
PROJECT NO. :

DRAWN BY
 JB

CHK'D BY
 ALN

a16

REV	DATE	REMARKS
0	04-17-22	FOR FABRICATION



2 L6x4x5/16x21-4 a27

GRADE: A36

NO PAINT

Holes ¹³/₁₆ Ø Unless Noted

PROJECT

P4 Outdoor LED Display

0 Liv Tuscon, Main Gate Square, 943 E University Blvd, Tuscon, AZ 85719

PROJECT NO. :

DRAWN BY

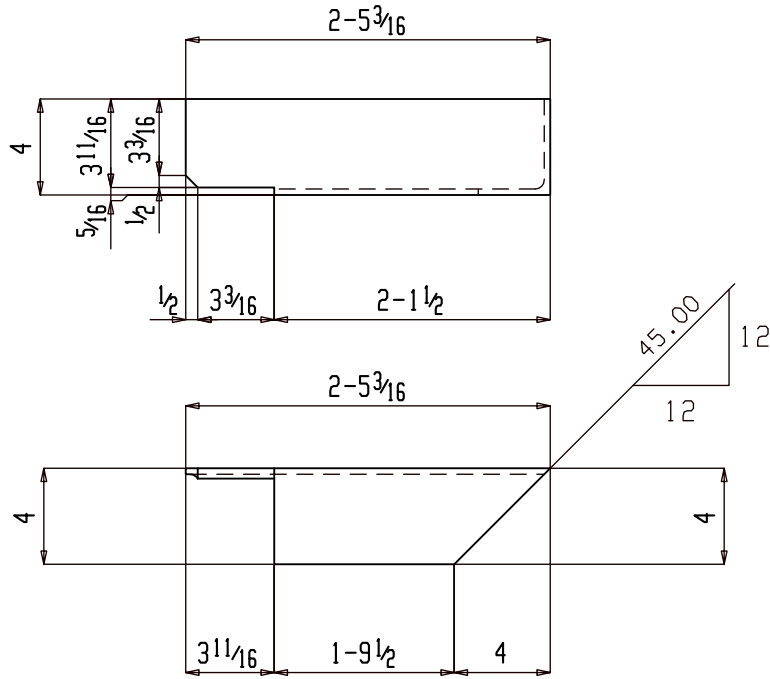
JB

CHK'D BY

ALN

a27

REV	DATE	REMARKS
0	04-17-22	FOR FABRICATION



2 L4x4x1/4x2-5³/₁₆ a30

GRADE: A36

NO PAINT

Holes ¹³/₁₆ Ø Unless Noted

PROJECT

P4 Outdoor LED Display

o Liv Tuscon, Main Gate Square, 943 E University Blvd, Tuscon, AZ 85719

PROJECT NO. :

DRAWN BY

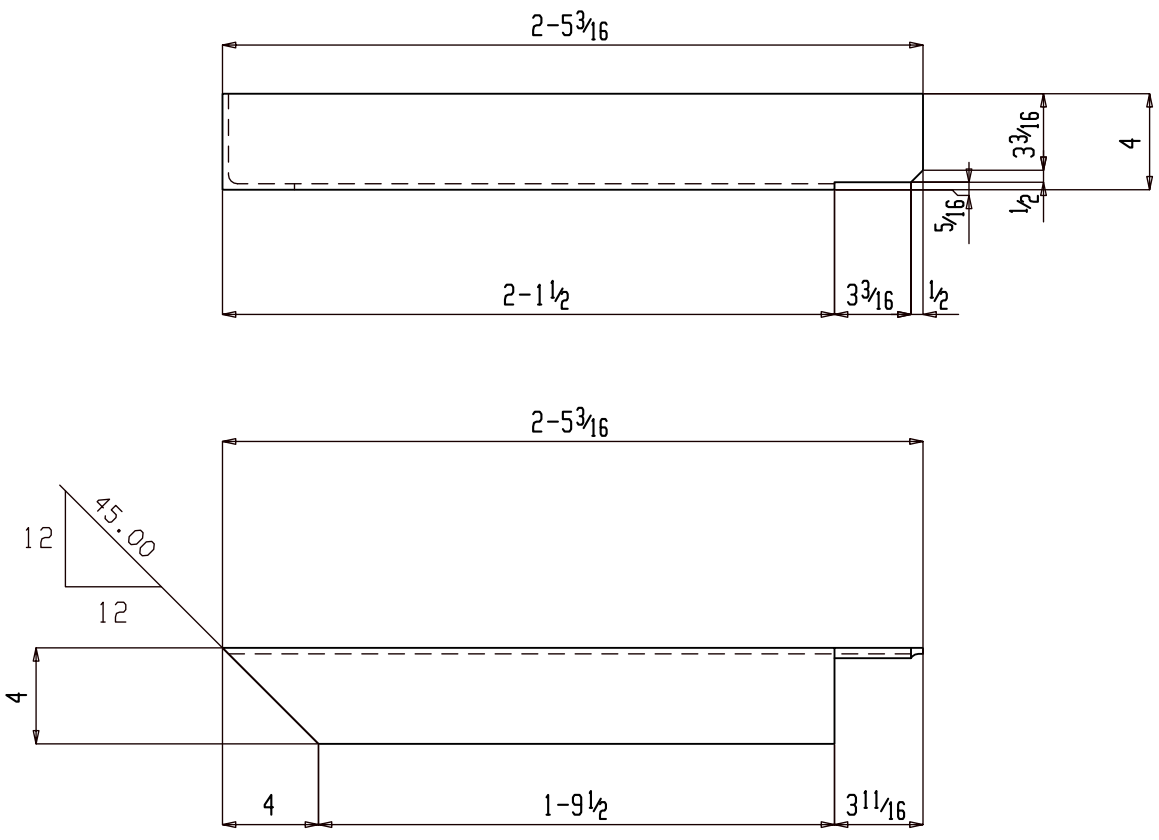
JB

CHK'D BY

ALN

a30

REV	DATE	REMARKS
0	04-17-22	FOR FABRICATION



2 L4x4x1/4x2-5³/₁₆ a31

GRADE: A36

NO PAINT

Holes ¹³/₁₆ Ø Unless Noted

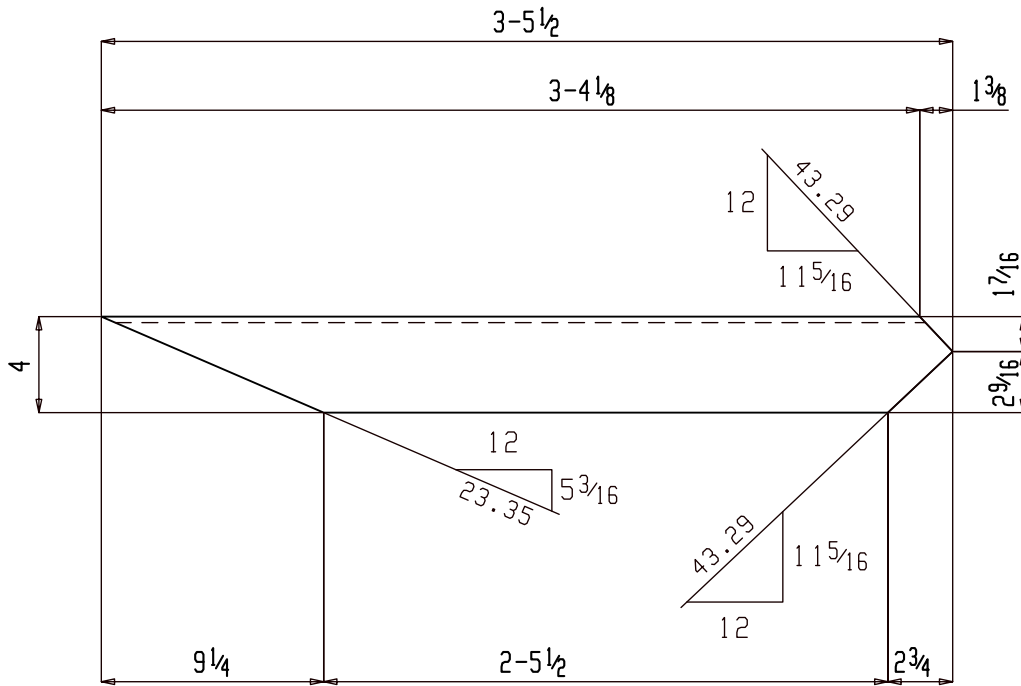
PROJECT P4 Outdoor LED Display
 0 Liv Tuscon, Main Gate Square, 943 E University Blvd, Tuscon, AZ 85719

PROJECT NO. :

DRAWN BY	CHK'D BY
JB	ALN

a31

REV	DATE	REMARKS
0	04-17-22	FOR FABRICATION



2 L4x4x $\frac{1}{4}$ x3-5 $\frac{1}{2}$ a39

GRADE: A36

NO PAINT

Holes $\frac{13}{16}$ \emptyset Unless Noted

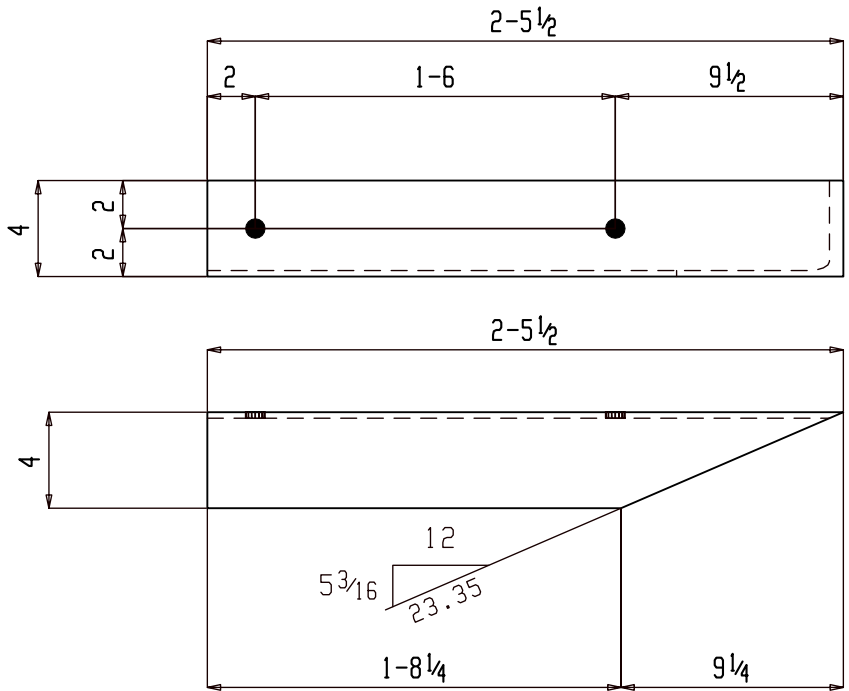
PROJECT P4 Outdoor LED Display
 0 Liv Tuscon, Main Gate Square, 943 E University Blvd, Tuscon, AZ 85719

PROJECT NO. :

DRAWN BY	CHK'D BY
JB	ALN

a39

REV	DATE	REMARKS
0	04-17-22	FOR FABRICATION



2 L4x4x1/4x2-5 1/2 a40

GRADE : A36

NO PAINT

Holes ¹³/₁₆ Ø Unless Noted

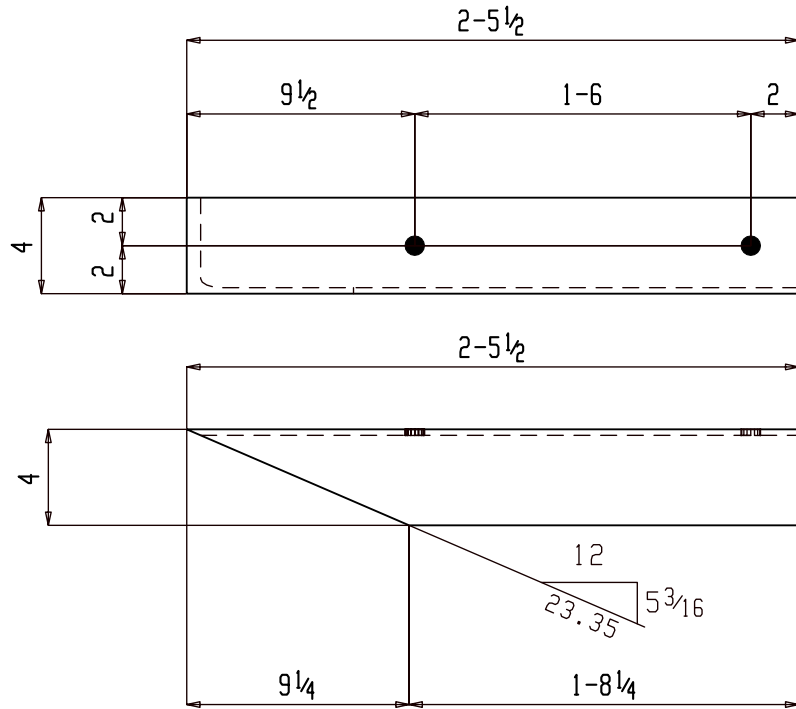
PROJECT P4 Outdoor LED Display
 0 Liv Tuscon, Main Gate Square, 943 E University Blvd, Tuscon, AZ 85719

PROJECT NO. :

DRAWN BY	CHK'D BY
JB	ALN

a40

REV	DATE	REMARKS
0	04-17-22	FOR FABRICATION



2 L4x4x $\frac{1}{4}$ x2-5 $\frac{1}{2}$ a41

GRADE: A36

NO PAINT

Holes $\frac{13}{16}$ \emptyset Unless Noted

PROJECT

P4 Outdoor LED Display

o Liv Tuscon, Main Gate Square, 943 E University Blvd, Tuscon, AZ 85719

PROJECT NO. :

DRAWN BY

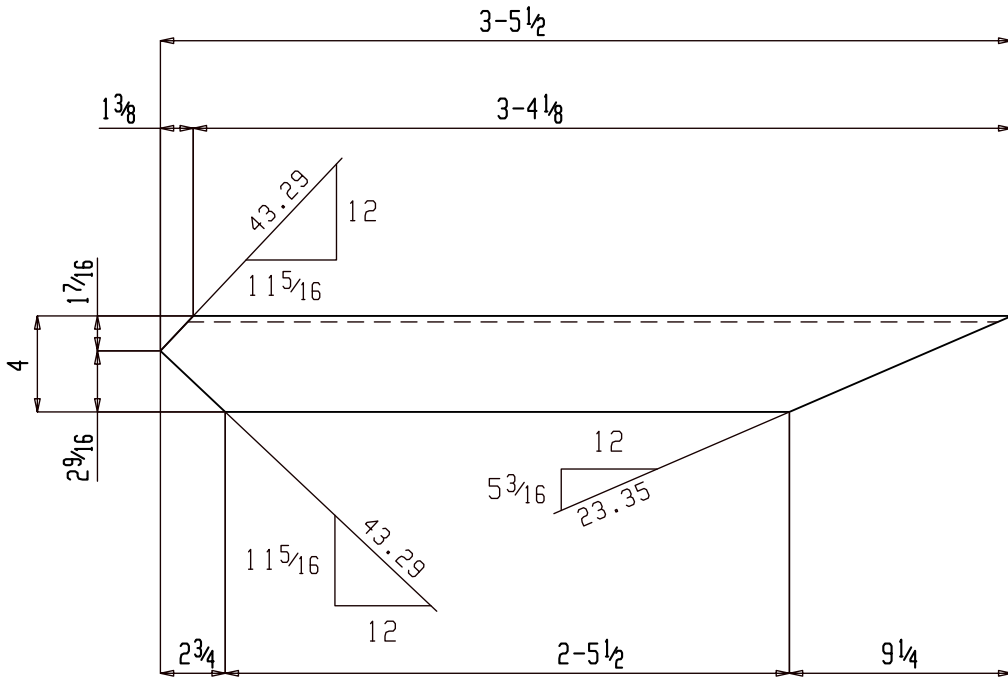
JB

CHK'D BY

ALN

a41

REV	DATE	REMARKS
0	04-17-22	FOR FABRICATION



2 L4x4x1/4x3-5 1/2 a42

GRADE: A36

NO PAINT

Holes 13/16 Ø Unless Noted

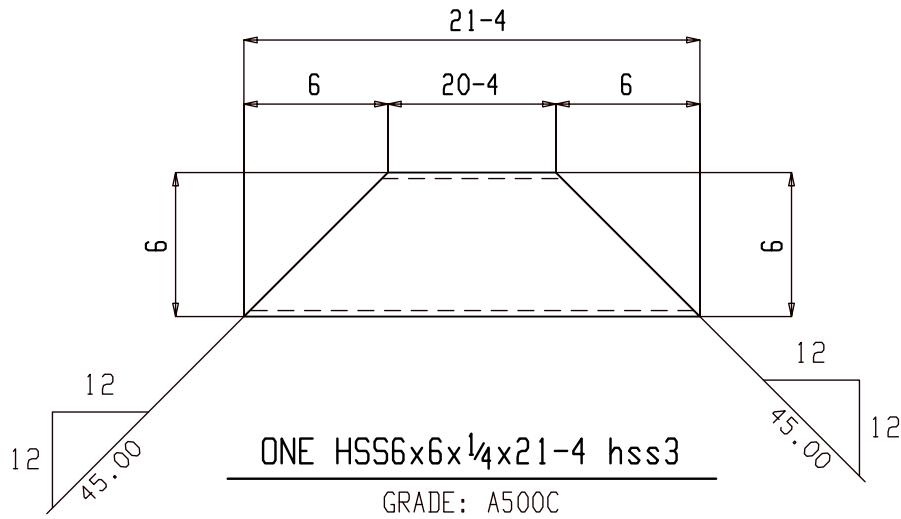
PROJECT P4 Outdoor LED Display
 0 Liv Tuscon, Main Gate Square, 943 E University Blvd, Tuscon, AZ 85719

PROJECT NO. :

DRAWN BY	CHK'D BY
JB	ALN

a42

REV	DATE	REMARKS
0	04-17-22	FOR FABRICATION



NO PAINT

Holes ¹³/₁₆ Ø Unless Noted

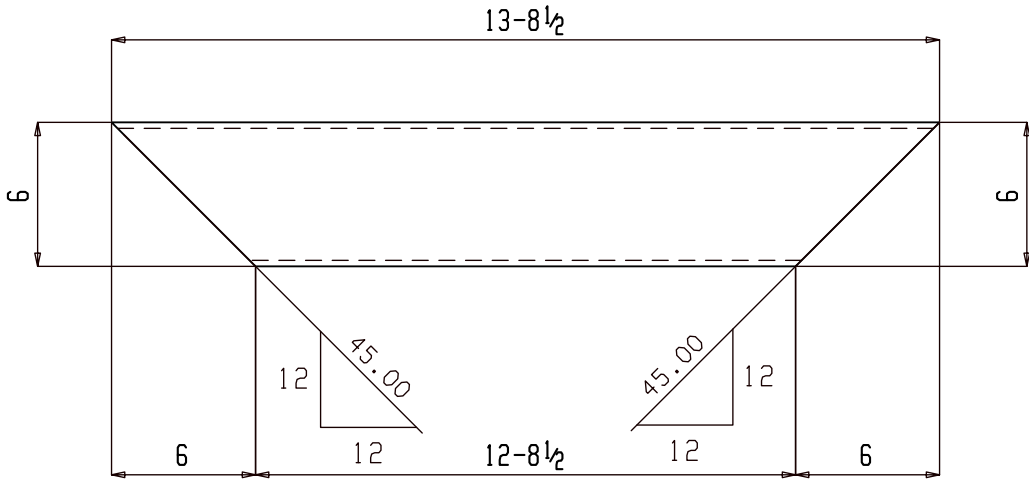
PROJECT P4 Outdoor LED Display
 0 Liv Tuscon, Main Gate Square, 943 E University Blvd, Tuscon, AZ 85719

PROJECT NO. :

DRAWN BY	CHK'D BY
JB	ALN

hss3

REV	DATE	REMARKS
0	03-29-22	FOR FABRICATION



2 HSS6x6x $\frac{1}{4}$ x $13-8\frac{1}{2}$ hss4

GRADE: A500C

NO PAINT

Holes $\frac{13}{16}$ \varnothing Unless Noted

PROJECT

P4 Outdoor LED Display

0 Liv Tuscon, Main Gate Square, 943 E University Blvd, Tuscon, AZ 85719

PROJECT NO. :

DRAWN BY

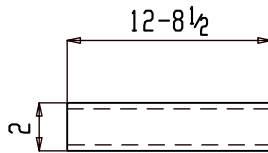
JB

CHK'D BY

ALN

hss4

REV	DATE	REMARKS
0	04-17-22	FOR FABRICATION



7 HSS2x2x1/4x12-8 1/2 hss9

GRADE: A500C

NO PAINT

Holes ¹³/₁₆ Ø Unless Noted

PROJECT P4 Outdoor LED Display
 0 Liv Tuscon, Main Gate Square, 943 E University Blvd, Tuscon, AZ 85719

PROJECT NO. :

DRAWN BY	CHK'D BY
JB	ALN

hss9